



CUSTOM MECHANICAL EQUIPMENT

SCREENING ENGINEERING MANUAL



(580) 762 - 4114

CMEMULTIZONE.COM

2101 HALL BLVD

PONCA CITY, OK



CUSTOM MECHANICAL EQUIPMENT

SCREENING ENGINEERING MANUAL



SCREENING STRUCTURE

- Exterior: Screening shall be constructed of high ribbed, color fast, 26 gauge steel siding and trim. Coatings shall be siliconized polyester or Polyvinylidene Fluoride. Which minimizes chalking and fading by resisting the detrimental effects of the sun's UV rays, rain, humidity and weathering. Superior abrasion resistance allows our product to endure the physical abuse of installation without cracking or marring.
- Structure: Welded, light weight aluminum construction designed to fit each cabinet's clearance and access points. Screens are manufactured in sections for ease transportation and install.
- Access: Hinged doors provide access through the screen wall to the unit. The doors are also removable for additional temporary clearance.
- Mounting: Screening structure is supported by roof top unit at each of the four corners. Intermediate support is provided on all sides longer than 108".
- Free air Clearance: Free air space at the bottom of each screen is determined by subtracting 3" from the overall curb height. Additional airflow may be provided via louvered screening.
- Color: Standard colors are included in the quotes, and premium/metallic colors can be ordered for an additional cost.
- Installation: Factory installation of screening is available for an additional cost.



CUSTOM MECHANICAL EQUIPMENT

COLOR CHART



Colony Green



Evergreen



Fern Green



Hawaiian Blue



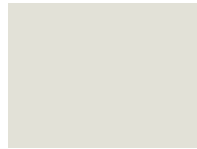
Gallery Blue*



Crimson Red



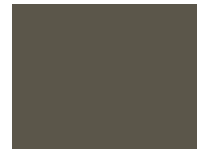
Berry



Polar White



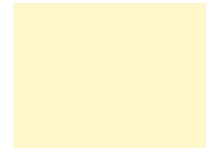
Ash Gray



Charcoal Gray



Black



Ivory



Saddle Tan



Light Stone



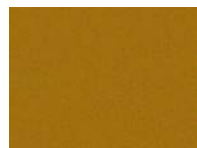
Desert Sand



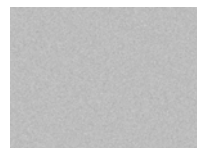
Cocoa Brown



Burnished Slate



Copper Metallic*



Galvalume



* Premium Colors

- Only available in 26 gauge.

All colors available with 40 year finish warranty.

Color samples shown may vary from actual coil color. Final color selection should be made from actual color chips available upon request.

PBR Panel



Agri-Rib Panel



**Premium colors carry a price and lead time increase
Colors only available in PBR and Agri-Rib panels*



CUSTOM MECHANICAL EQUIPMENT

COLOR CHART

STANDARD COLORS



REGAL WHITE



BONE WHITE



SURREY BEIGE



SANDSTONE



ALMOND



BUCKSKIN



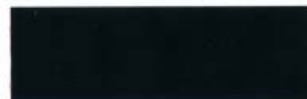
ASH GRAY



SLATE GRAY



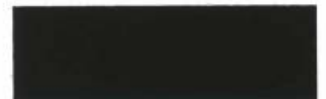
CHARCOAL



MATTE BLACK



MEDIUM BRONZE



DARK BRONZE



REGAL BLUE



PATINA GREEN



EVERGREEN



MANSARD BROWN



BRITE RED



COLONIAL RED



ROMAN BLUE



PATRICIAN BRONZE



HARTFORD GREEN



TERRA COTTA

METALLIC COLORS

ADDITIONAL COST WILL APPLY.



PREWEATHERED GALVALUME



LEADCOAT



SILVER METALLIC



COPPER PENNY METALLIC



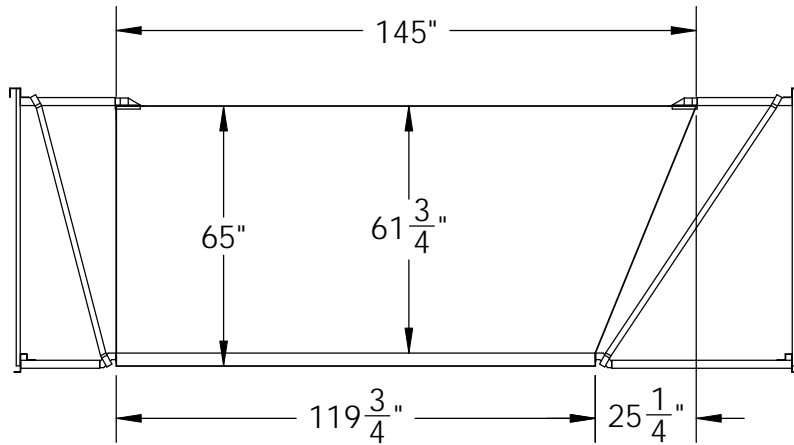
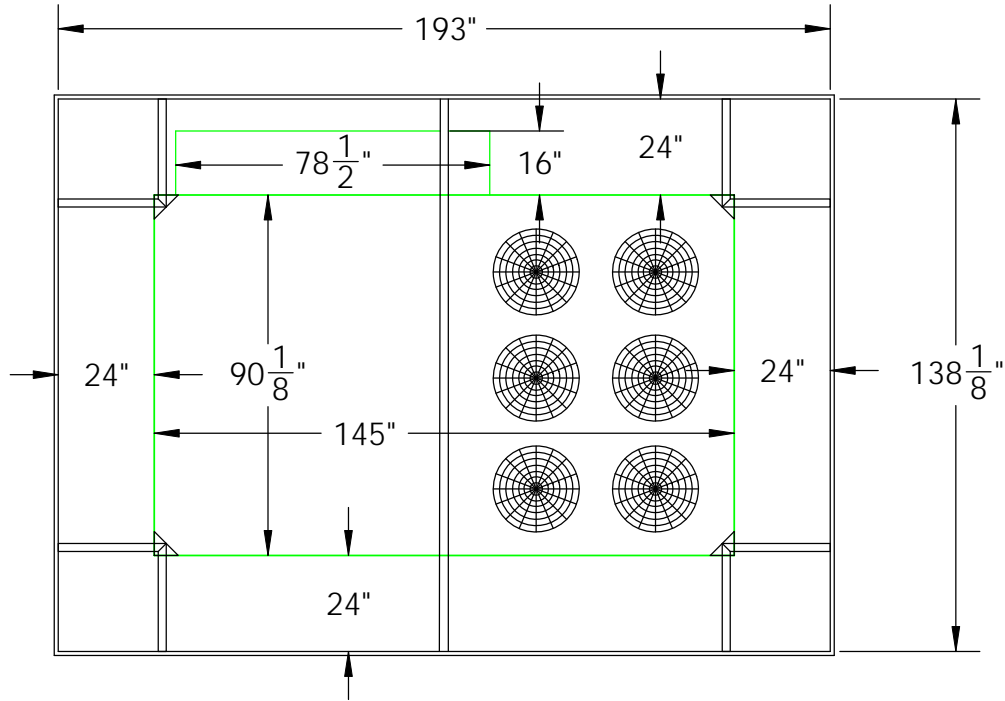
TEXAS SILVER METALLIC



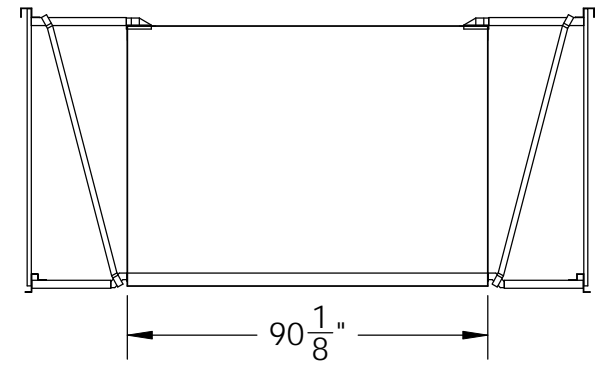
CHAMPAGNE METALLIC

* Colors are representative of colors offered and are not intended for matching purposes. Before placing an order, please request an actual color sample from McElroy Metal.

**Deep Tone Premium and Metallic colors carry a price and lead time increase
Colors only available in McElroy panel types (PBR ,PBU, PBC, PBD, & 7.2)
PBU, PBC, PBD, & 7.2 panel may carry a price and lead time increase*



TOTAL SCREEN WEIGHT: 900LBS



COLOR: TO BE DETERMINED
MBCI Sig. 200 Series

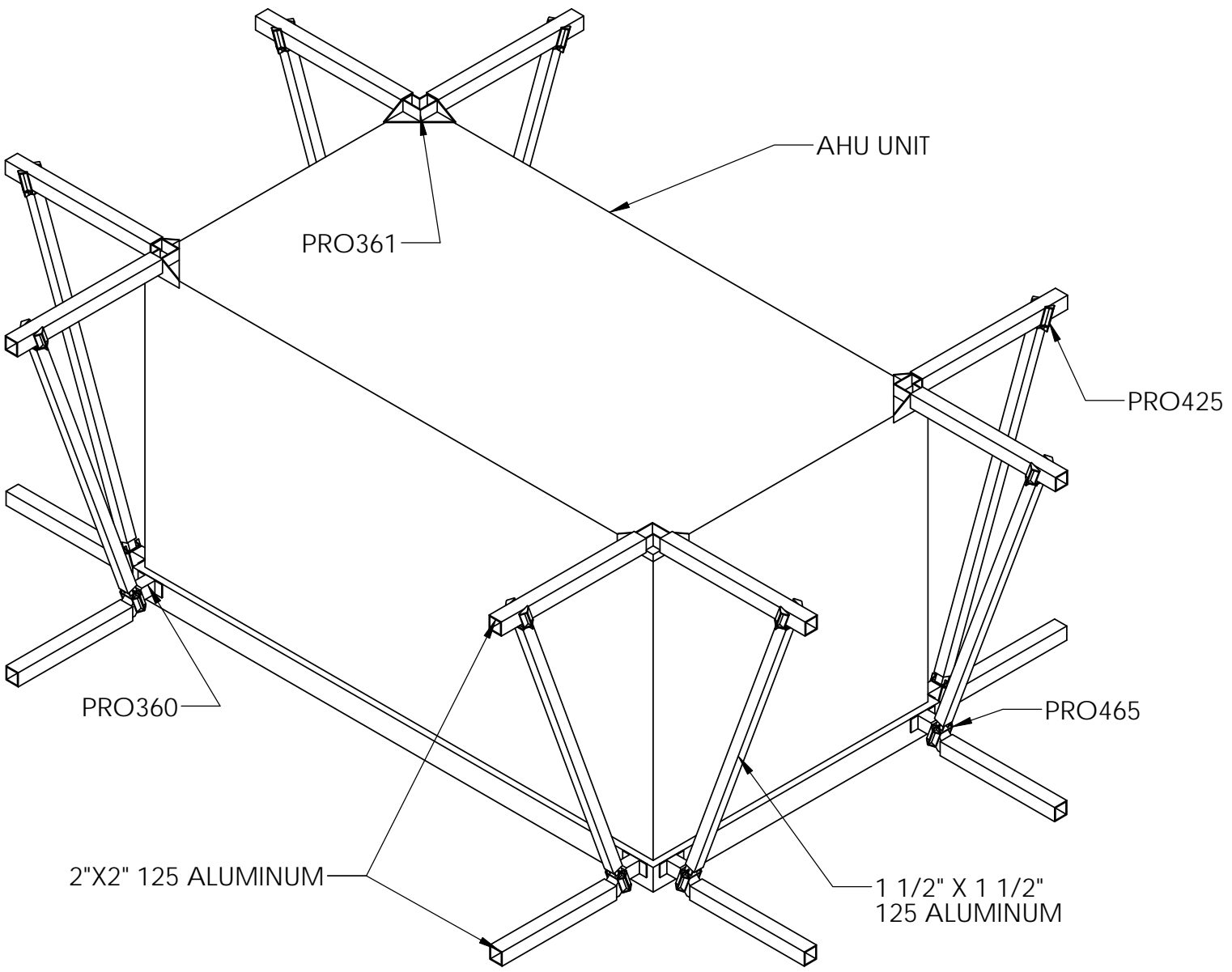
CUSTOM MECHANICAL EQUIPMENT

2101 HALL BLVD.
PONCA CITY, OK 74601
PHONE: (580) 762-4114
FAX: (580) 762-4117

PROPRIETARY AND CONFIDENTIAL

THIS INFORMATION IS THE SOLE PROPERTY OF CUSTOM MECHANICAL EQUIPMENT. ANY REPRODUCTION IN PART OR AS A WHOLE WITHOUT THE WRITTEN PERMISSION OF CUSTOM MECHANICAL EQUIPMENT IS PROHIBITED.

NAME		DATE	DESCRIPTION		
DRAWN	SML	6/20/14	LGH-242, 300, 360 SCREENING		
CHECKED	SML	6/20/14			
SHOP			DRAWING NO. 2021XX-01		
DIMENSIONS ARE IN INCHES			SCALE: 1:48	WEIGHT: 900LBS	SHEET 1 OF 3
					REV. 1



5 4 3 2 1

CUSTOM MECHANICAL EQUIPMENT

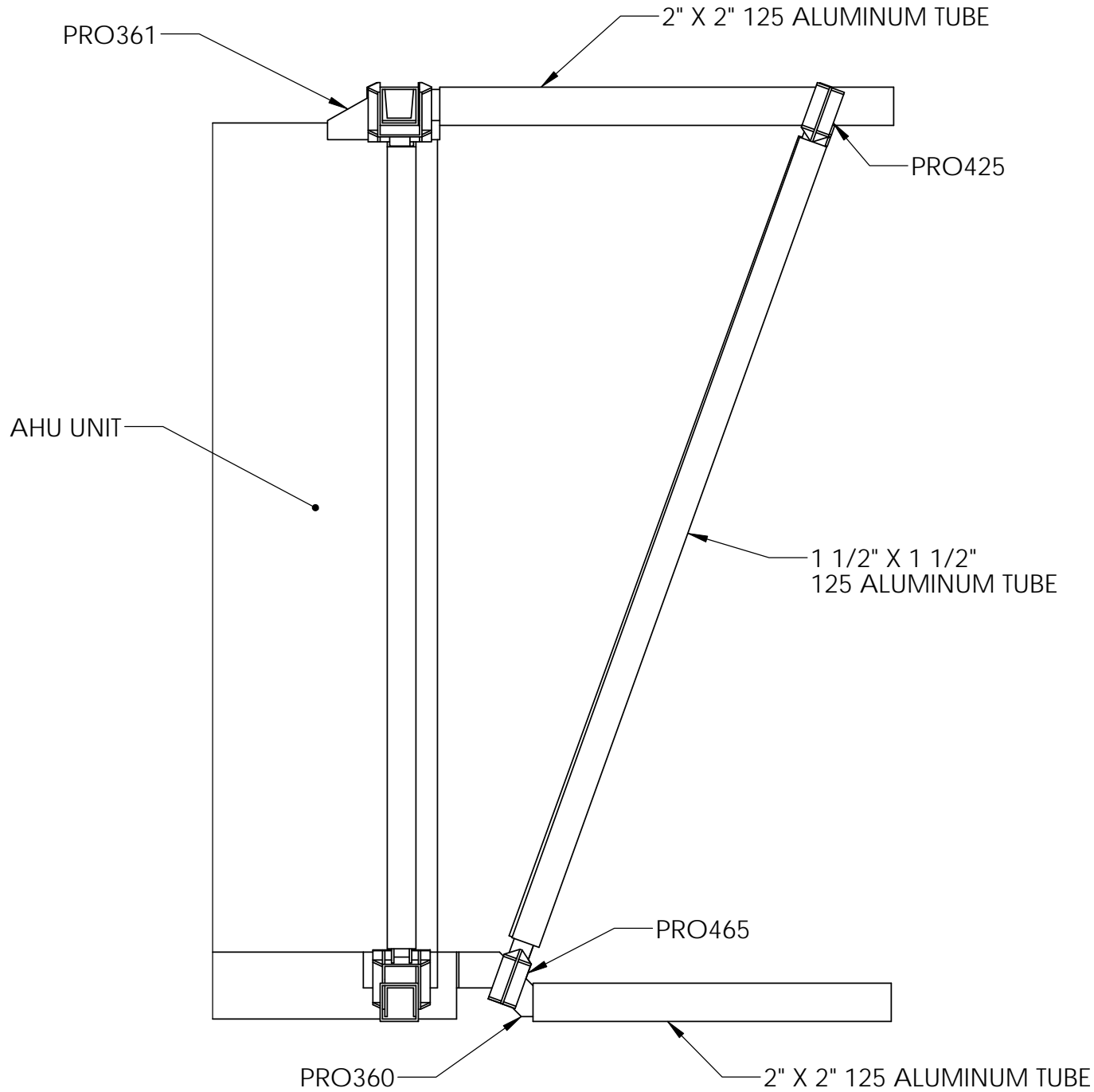
2101 HALL BLVD.
POMCA CITY, OK 74601
PHONE: (580) 762-4114
FAX: (580) 762-4117

PROPRIETARY AND CONFIDENTIAL
THIS INFORMATION CONTAINED IN
THIS DOCUMENT IS THE SOLE
PROPERTY OF PUMCA CITY. ANY
REPRODUCTION IN PART OR AS A
WHOLE WITHOUT THE WRITTEN
PERMISSION OF CUSTOM
MECHANICAL EQUIPMENT IS
PROHIBITED.

NAME	DATE
DRAWN SML	10/16/14
CHECKED SML	10/16/14
SHOP	

DESCRIPTION	DRAWING NO.	REV.
CME SCREENING ASSEMBLY	2021XX-01	0
JOB NAME		
JOB LOCATION		

DIMENSIONS ARE IN INCHES
SCALE: 1:18
WEIGHT:
SHEET 1 OF 2



5 4 3 2 1

CUSTOM MECHANICAL EQUIPMENT

2101 HALL BLVD.
PONCA CITY, OK 74601
PHONE: (580) 762-4114
FAX: (580) 762-4117

PROPRIETARY AND CONFIDENTIAL

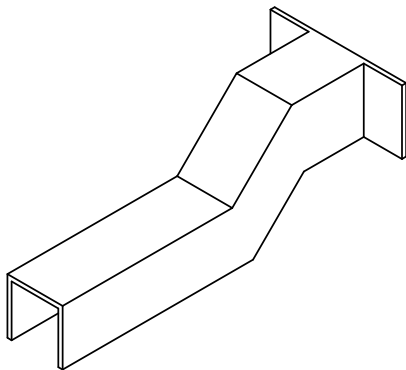
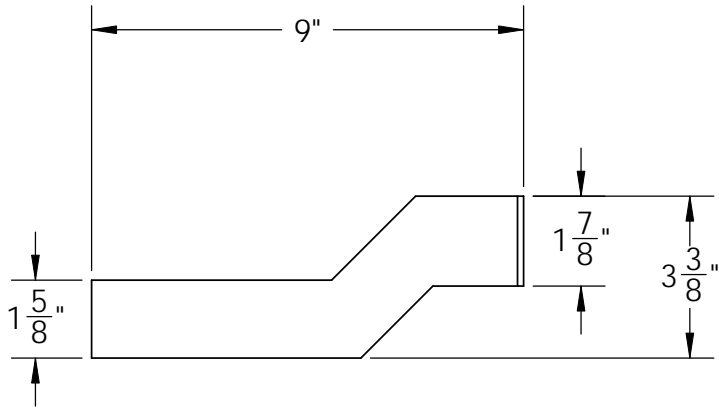
THE INFORMATION CONTAINED IN THIS DOCUMENT IS THE SOLE PROPERTY OF CUSTOM MECHANICAL EQUIPMENT. ANY REPRODUCTION IN PART OR AS A WHOLE WITHOUT THE WRITTEN PERMISSION OF CUSTOM MECHANICAL EQUIPMENT IS PROHIBITED.

NAME	DATE
DRAWN SML	10/16/14
CHECKED SML	10/16/14
SHOP	

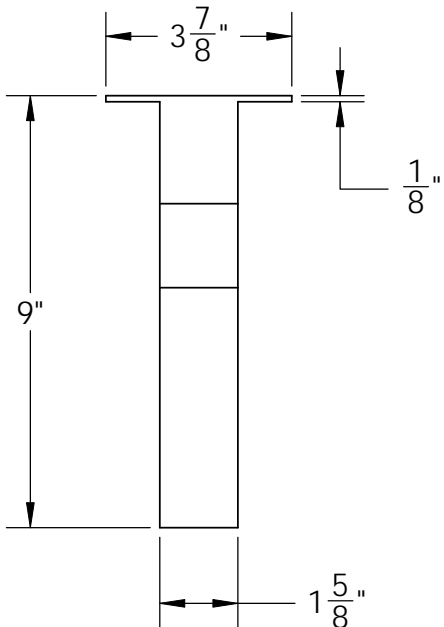
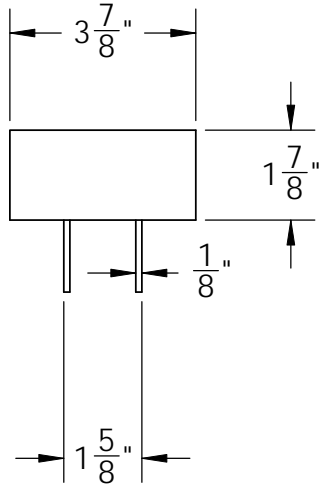
DESCRIPTION
CME SCREENING ASSEMBLY
JOB NAME
JOB LOCATION
DRAWING NO. 2021XX-01

SCALE: 1:18	WEIGHT:	SHEET 1 OF 2
-------------	---------	--------------

REV. 0



PRO 360-5
MATERIAL: AL 356.2



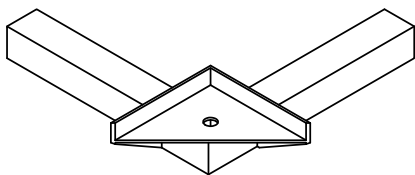
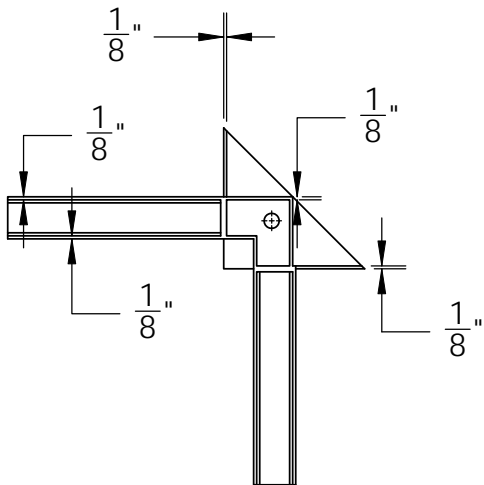
CUSTOM MECHANICAL EQUIPMENT

2101 HALL BLVD.
PONCA CITY, OK 74601
PHONE: (580) 762-4114
FAX: (580) 762-4117

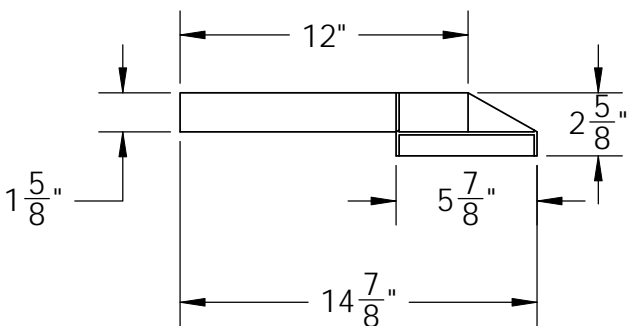
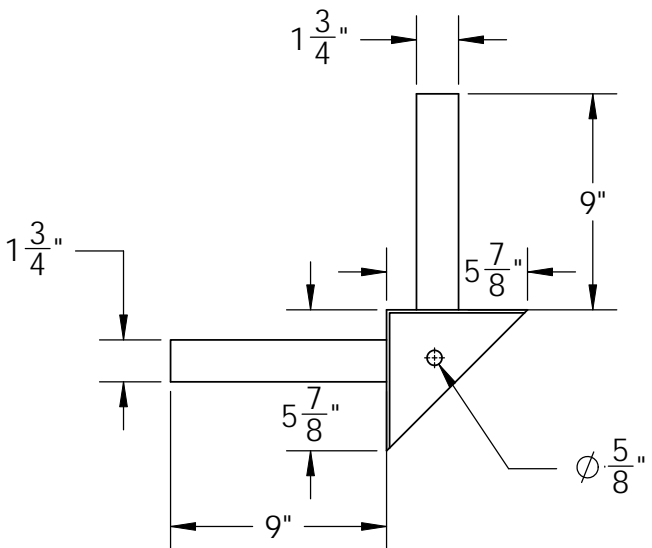
PROPRIETARY AND CONFIDENTIAL

THIS DOCUMENT CONTAINED IN THIS DRAWING IS THE SOLE PROPERTY OF CUSTOM MECHANICAL EQUIPMENT. ANY REPRODUCTION IN PART OR AS A WHOLE WITHOUT THE WRITTEN PERMISSION OF CUSTOM MECHANICAL EQUIPMENT IS PROHIBITED.

DRAWN		NAME	DATE	DESCRIPTION	
CHECKED		SML	6/20/14		
SHOP			6/20/14		
DIMENSIONS ARE IN INCHES				PRO360-5	REV.
				MATERIAL: AL 356.2	0
				BOTTOM SUPPORT	
				DRAWING NO. 2021XX-01	
				SCALE: 1:4	SHEET 1 OF 1
				WEIGHT:	



PRO 361-5
MATERIAL: AL 356.2



CUSTOM MECHANICAL EQUIPMENT

2101 HALL BLVD.
PONCA CITY, OK 74601
PHONE: (580) 762-4114
FAX: (580) 762-4117

PROPRIETARY AND CONFIDENTIAL

THE INFORMATION CONTAINED IN THIS DOCUMENT IS THE SOLE PROPERTY OF CUSTOM MECHANICAL EQUIPMENT. ANY REPRODUCTION IN PART OR AS A WHOLE WITHOUT THE WRITTEN PERMISSION OF CUSTOM MECHANICAL EQUIPMENT IS PROHIBITED.

NAME	DATE
DRAWN SML	6/20/14
CHECKED SML	6/20/14
SHOP	

DESCRIPTION
PRO361-5
MATERIAL: AL 356.2
TOP SUPPORT
DRAWING NO. 2021XX-01

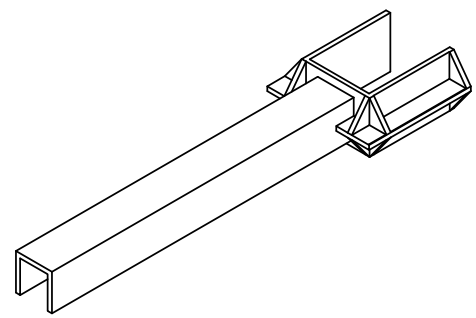
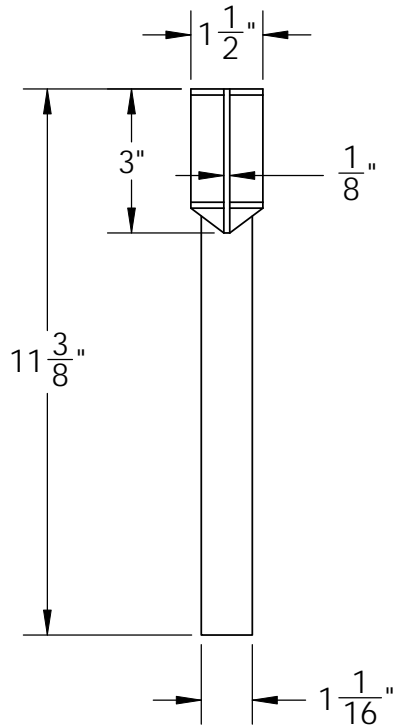
DIMENSIONS ARE IN INCHES

SCALE: 1:8

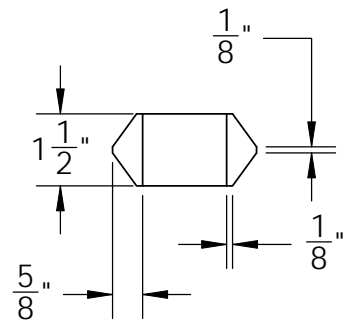
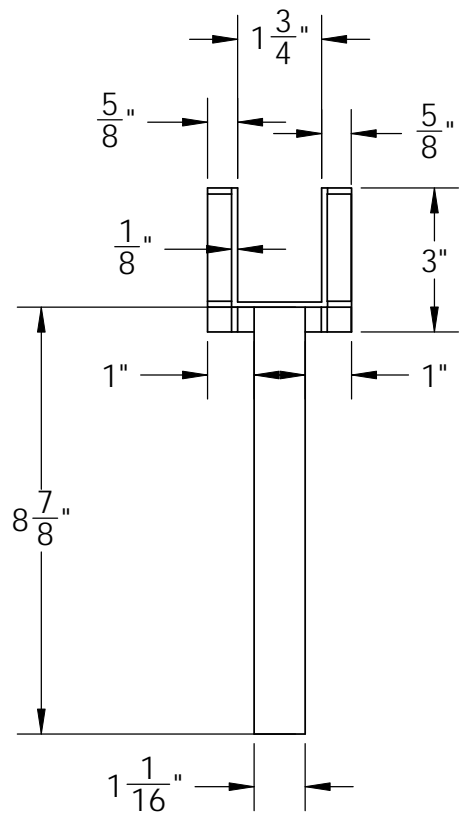
WEIGHT:

SHEET 1 OF 1

REV. 0



PRO 465-5
MATERIAL: AL 356.2

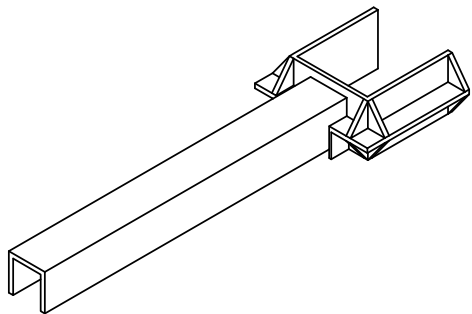
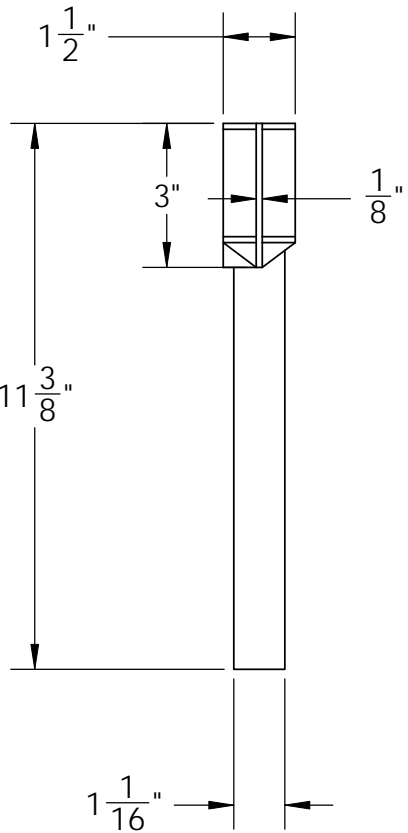


CUSTOM MECHANICAL EQUIPMENT

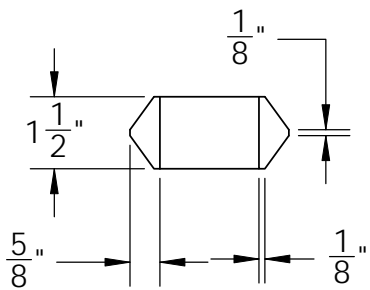
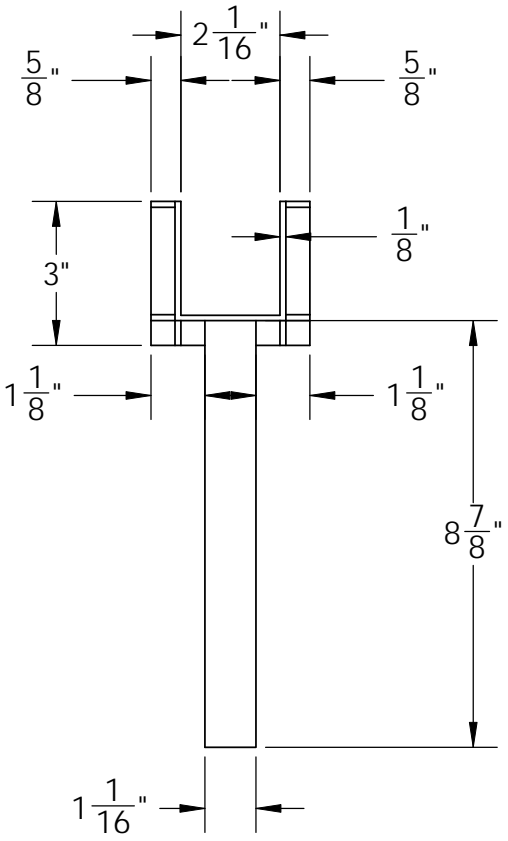
2101 HALL BLVD.
PONCA CITY, OK 74601
PHONE: (580) 762-4114
FAX: (580) 762-4117

THE INFORMATION CONTAINED IN
THIS DOCUMENT IS THE SOLE
PROPERTY OF PONTA CITY MECHANICAL
EQUIPMENT. ANY
REPRODUCTION IN PART OR AS A
WHOLE WITHOUT THE WRITTEN
PERMISSION OF CUSTOM
MECHANICAL EQUIPMENT IS
PROHIBITED.

NAME	DATE	DESCRIPTION
DRAWN	6/20/14	PRO465
CHECKED	6/20/14	MATERIAL: AL 356.2
SHOP		LOWER FORK
DIMENSIONS ARE IN INCHES		DRAWING NO. 2021XX-01
SCALE: 1:4	WEIGHT:	SHEET 1 OF 1
		REV. 1



PRO 425-5
MATERIAL: AL 356.2

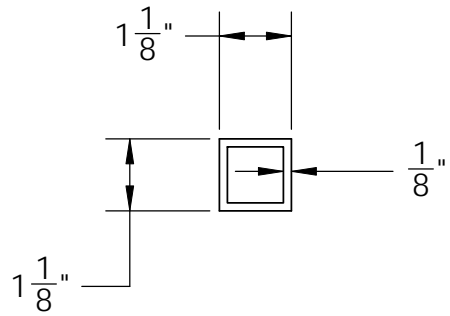


CUSTOM MECHANICAL EQUIPMENT

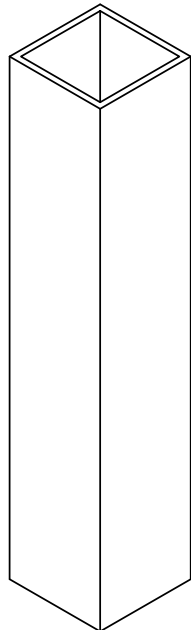
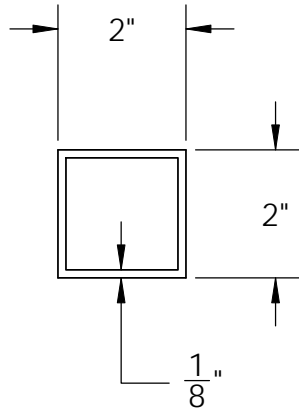
2101 HALL BLVD.
PONCA CITY, OK 74601
PHONE: (580) 762-4114
FAX: (580) 762-4117

THE INFORMATION CONTAINED IN THIS DOCUMENT IS THE SOLE PROPERTY OF CUSTOM MECHANICAL EQUIPMENT. ANY REPRODUCTION IN PART OR AS A WHOLE WITHOUT THE WRITTEN PERMISSION OF CUSTOM MECHANICAL EQUIPMENT IS PROHIBITED.

NAME	DATE	DESCRIPTION
DRAWN	6/20/14	PRO 425-5
CHECKED	6/20/14	MATERIAL: AL 356.2
SHOP		UPPER FORK
DIMENSIONS ARE IN INCHES		DRAWING NO. 2021XX-01
SCALE: 1:4	WEIGHT:	REV. 0
		SHEET 1 OF 1



CROSSMEMEBER TUBES



TOP AND BOTTOM TUBES

MATERIAL: 6063-T52

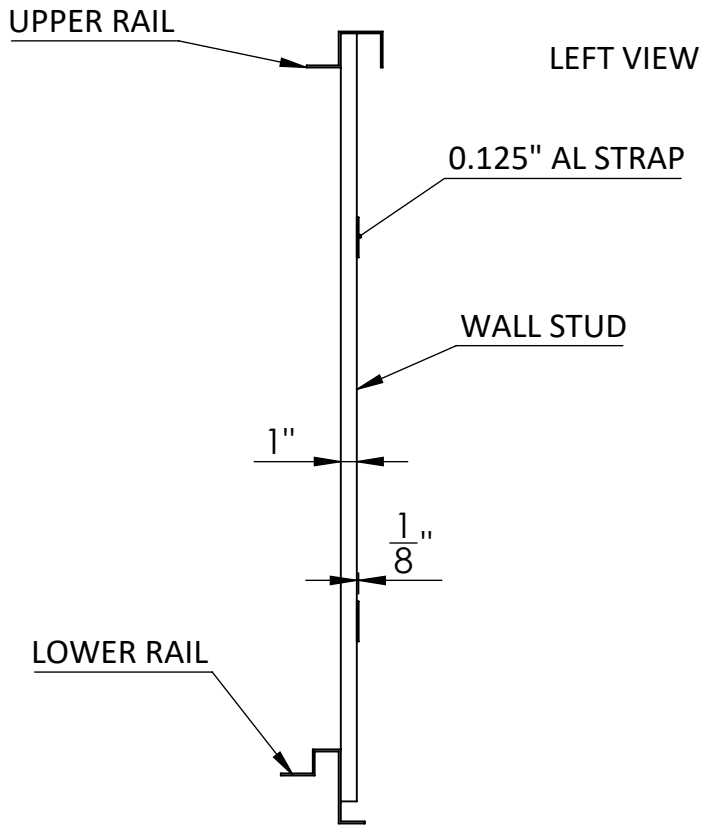
CUSTOM MECHANICAL EQUIPMENT

2101 HALL BLVD.
PONCA CITY, OK 74601
PHONE: (580) 762-4114
FAX: (580) 762-4117

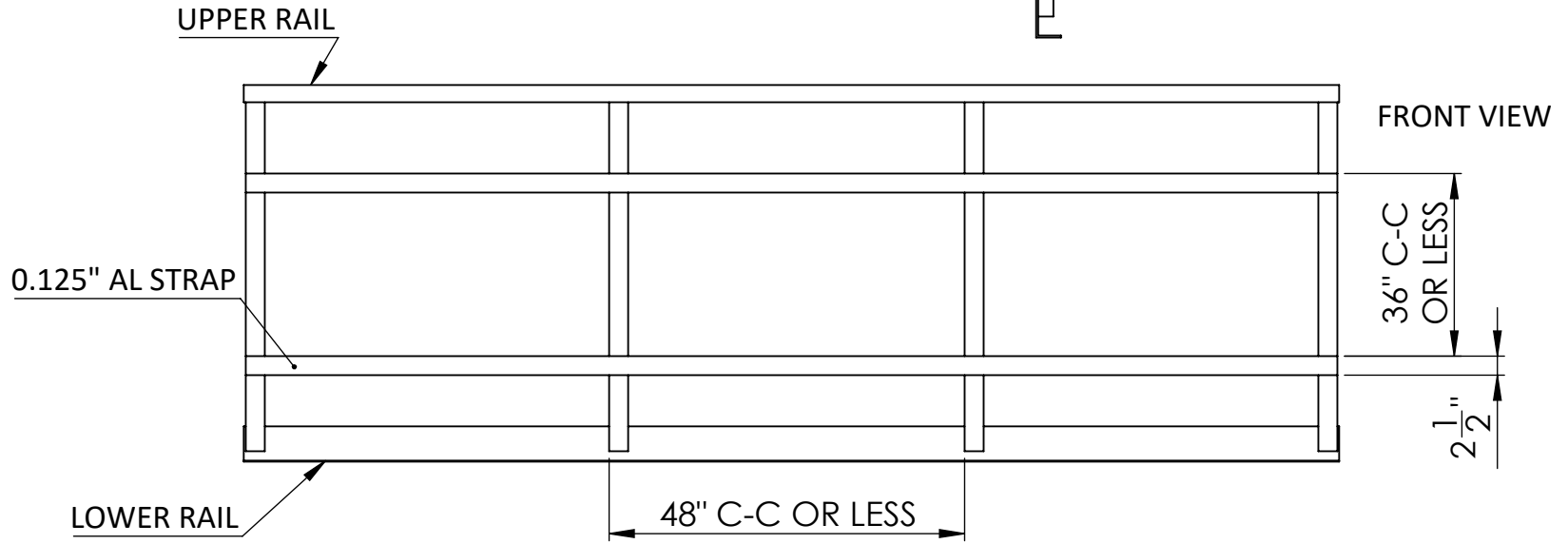
PROPRIETARY AND CONFIDENTIAL

THE INFORMATION CONTAINED IN THIS DOCUMENT IS THE SOLE PROPERTY OF CUSTOM MECHANICAL EQUIPMENT. ANY REPRODUCTION IN PART OR AS A WHOLE WITHOUT THE WRITTEN PERMISSION OF CUSTOM MECHANICAL EQUIPMENT IS PROHIBITED.

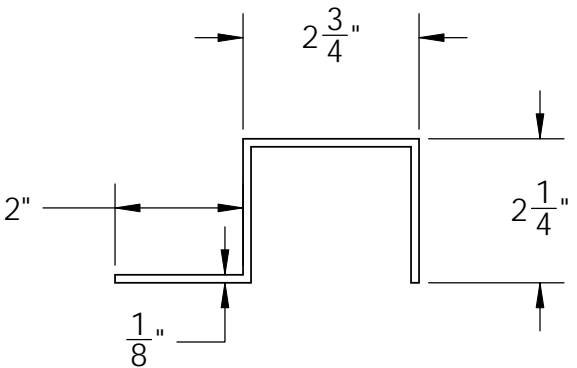
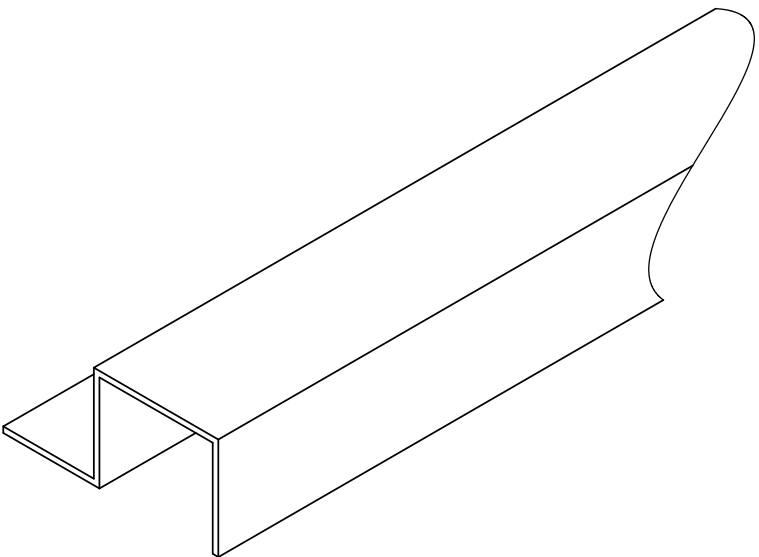
DESCRIPTION		NAME	DATE
DRAWN		SML	6/20/14
CHECKED		SML	6/20/14
SHOP			
DIMENSIONS ARE IN INCHES			
SCREENING TUBES		DRAWING NO. 2021XX-01	
MATERIAL: 6063-T52		REV. 0	
SCALE: 1:3		WEIGHT:	
		SHEET 1 OF 1	



NOTE:
 -STANDARD SIDING IS 26 GAUGE STEEL
 - STANDARD ATTACHMENT IS 3/8" HEX WASHER
 HEAD ZINC 14X1 I.T.C 63198-0314



C	TD	CHANICAL	IP	NT	DESCRIPTION		
2101 HALL BLVD. PONCA CITY, OK 74601 PHONE: (580) 762-4114 FAX: (580) 762-4117					WALL FRAME		
THE INFORMATION CONTAINED IN THIS DOCUMENT IS THE SOLE PROPERTY OF THE COMPANY. NO REPRODUCTION IN PART OR AS A WHOLE WITHOUT THE WRITTEN PERMISSION OF CUSTOMER IS FROHIBITED.					NAME	DATE	
					DRAWN	JLW	3/31/2022
					CHECKED	JLW	5/3/2024
					SHOP		
					DIMENSIONS ARE IN INCHES SCALE: 1/2" = 1'-0" WEIGHT:		
					DRAWING NO. 2024EM-01 SHEET 1 OF 1		
					REV. 0		



UPPER RAIL
MATERIAL: 6005-T5

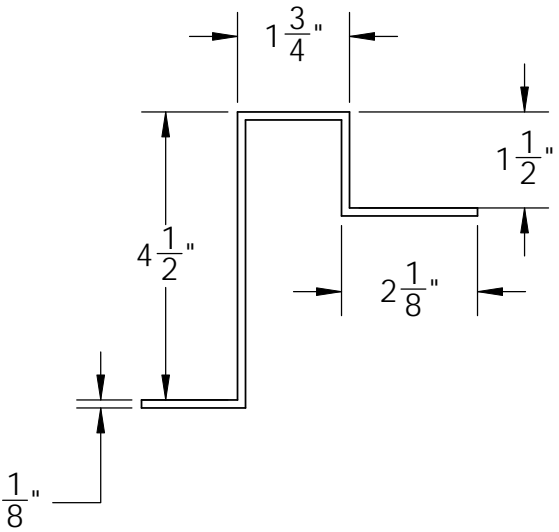
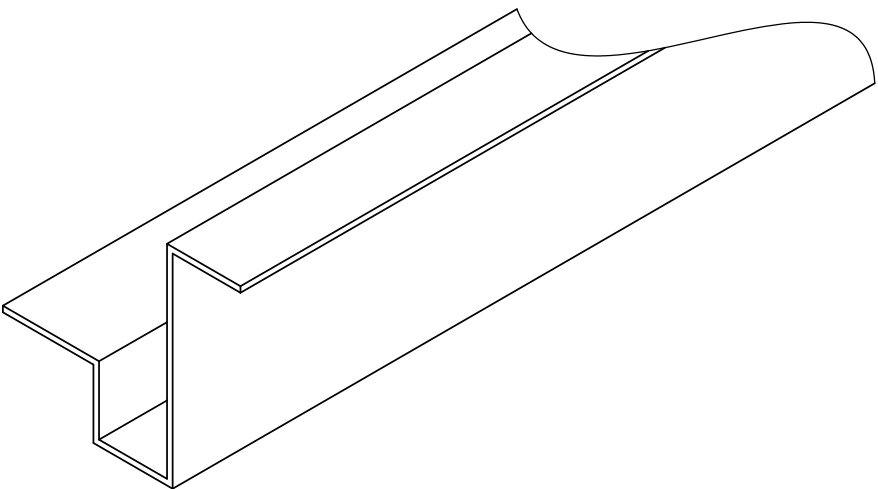
CUSTOM MECHANICAL EQUIPMENT

2101 HALL BLVD.
PONCA CITY, OK 74601
PHONE: (580) 762-4114
FAX: (580) 762-4117

PROPRIETARY AND CONFIDENTIAL

THE INFORMATION CONTAINED IN
THIS DOCUMENT IS THE SOLE
PROPERTY OF CUSTOM MECHANICAL
EQUIPMENT. ANY
REPRODUCTION IN PART OR AS A
WHOLE WITHOUT THE WRITTEN
PERMISSION OF CUSTOM
MECHANICAL EQUIPMENT IS
PROHIBITED.

NAME		DATE	DESCRIPTION		
DRAWN	SML	6/20/14	UPPER RAIL		
CHECKED	SML	6/20/14	MATERIAL: 6005-T5		
SHOP			DRAWING NO.	2021XX-01	REV. 0
DIMENSIONS ARE IN INCHES			SCALE: 1:3	WEIGHT:	SHEET 1 OF 1



LOWER RAIL
MATERIAL: 6005-T5

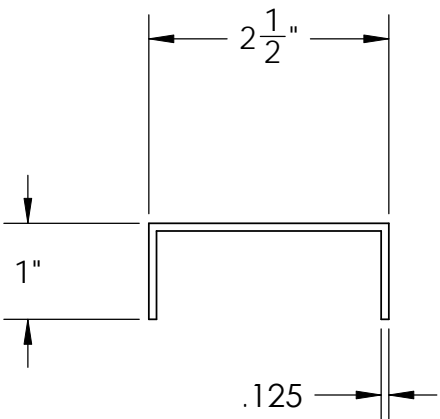
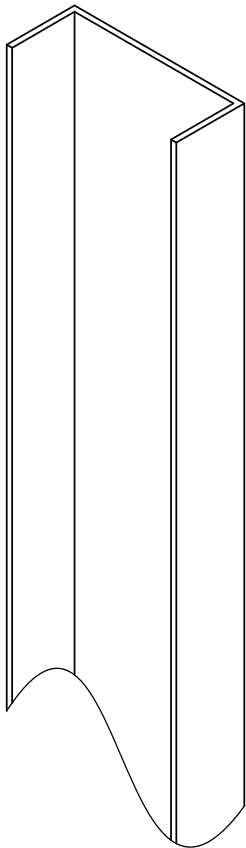
CUSTOM MECHANICAL EQUIPMENT

2101 HALL BLVD.
PONCA CITY, OK 74601
PHONE: (580) 762-4114
FAX: (580) 762-4117

PROPRIETARY AND CONFIDENTIAL

THE INFORMATION CONTAINED IN THIS DOCUMENT IS THE SOLE PROPERTY OF CUSTOM MECHANICAL EQUIPMENT. ANY REPRODUCTION IN PART OR AS A WHOLE WITHOUT THE WRITTEN PERMISSION OF CUSTOM MECHANICAL EQUIPMENT IS PROHIBITED.

NAME		DATE		DESCRIPTION	
DRAWN	SML	6/20/14	LOWER RAIL	MATERIAL: 6005-T5	
CHECKED	SML	6/20/14			
SHOP					
DIMENSIONS ARE IN INCHES				DRAWING NO.	REV.
SCALE: 1:3				2021XX-01	0
WEIGHT:				SHEET 1 OF 1	



.125 C CHANNEL
MATERIAL: 6061-T6

CUSTOM MECHANICAL EQUIPMENT

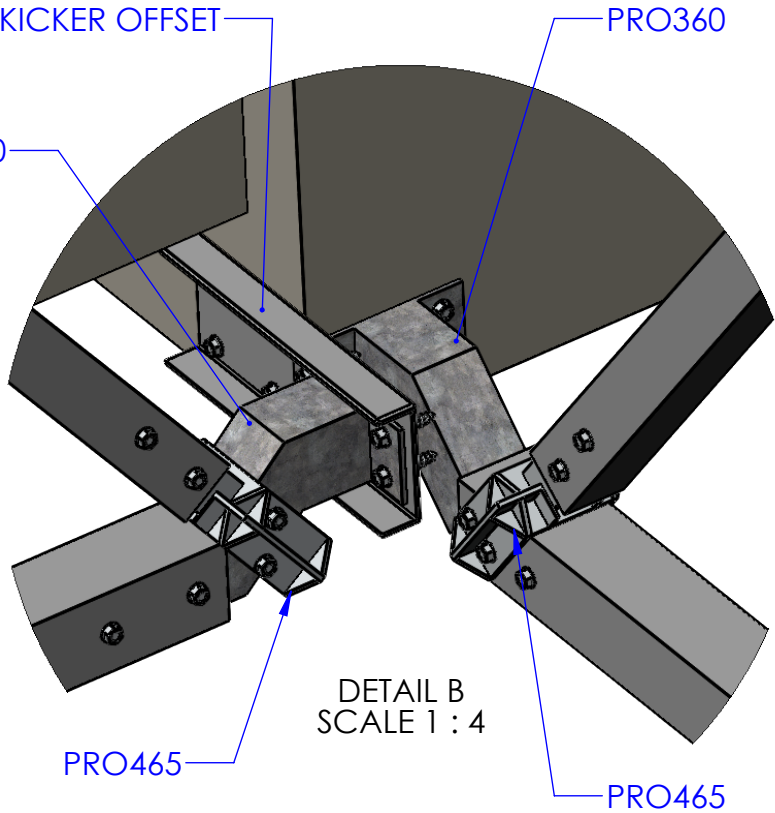
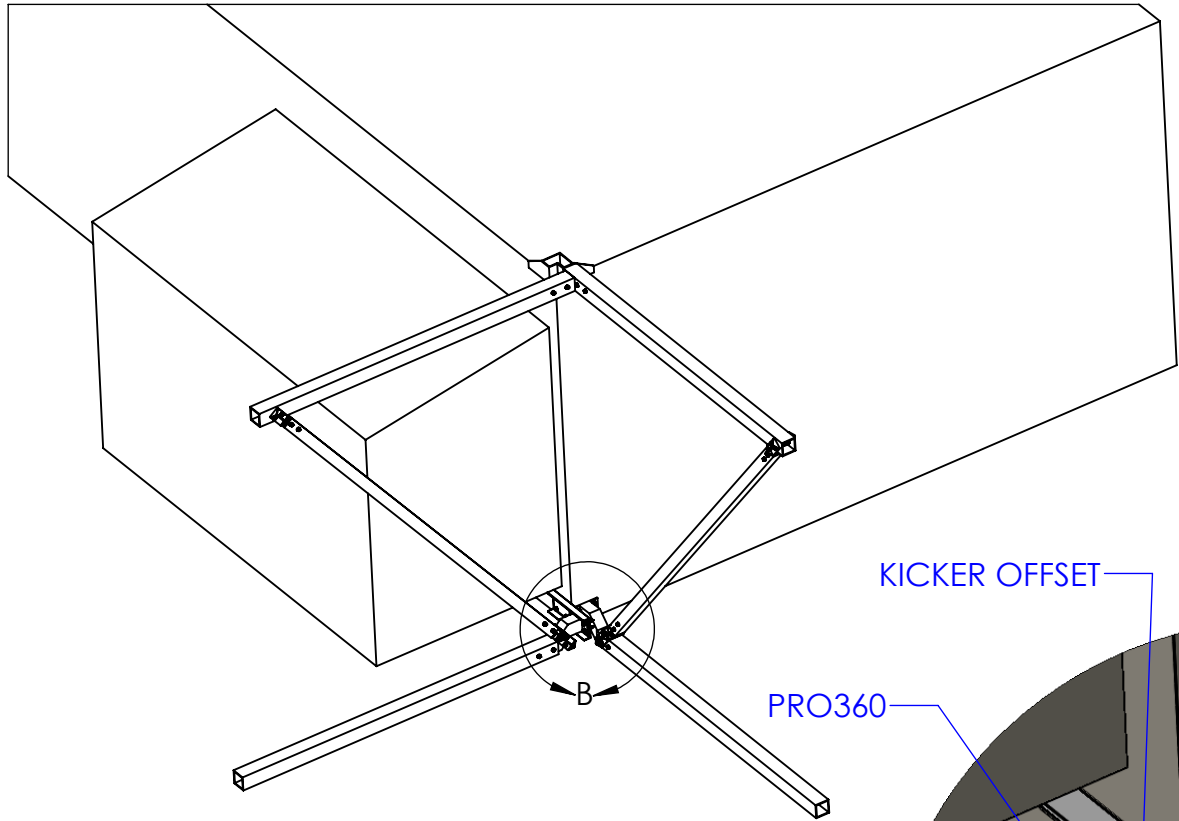
2101 HALL BLVD.
PONCA CITY, OK 74601
PHONE: (580) 762-4114
FAX: (580) 762-4117

PROPRIETARY AND CONFIDENTIAL

THE INFORMATION CONTAINED IN
THIS DOCUMENT IS THE SOLE
PROPERTY OF CUSTOM MECHANICAL
EQUIPMENT. ANY
REPRODUCTION IN PART OR AS A
WHOLE WITHOUT THE WRITTEN
PERMISSION OF CUSTOM
MECHANICAL EQUIPMENT IS
PROHIBITED.

CUSTOMER INFORMATION			DESCRIPTION	
DRAWN	NAME	DATE	0.080" C CHANNEL MATERIAL: 3003-H14 DRAWING NO. 2021XX-01	
CHECKED	SML	6/20/14		
SHOP	SML	6/20/14		
DIMENSIONS ARE IN INCHES			SCALE: 1:2	WEIGHT: 0
				REV. 0
				SHEET 1 OF 1

KICKER OFFSET ALLOWS
CROSS BRACE TO INSTALL
WHERE UNIT HOOD OR
DISSCONNECT CAUSES
CLEARANCE INTERFERENCE



INSTALL KICKER OFFSET WITH (4) 3/8" SELF-TAPPING SCREWS
INSTALL PRO360 WITH (4) 3/8" SELF-TAPPING SCREWS
ALL TUBES REQUIRE (3) 3/8" SELF-TAPPING SCREWS
PRO465 REQUIRE (3) 3/8" SELF-TAPPING SCREWS
ALL TUBES ADJUST TO LEVEL AND PLUMB SCREEN WALL

CUSTOM MECHANICAL EQUIPMENT

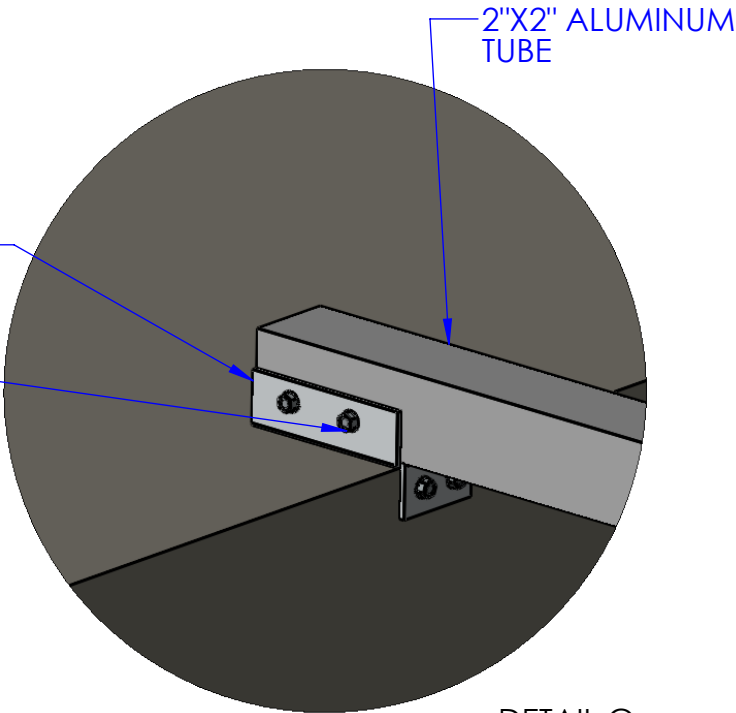
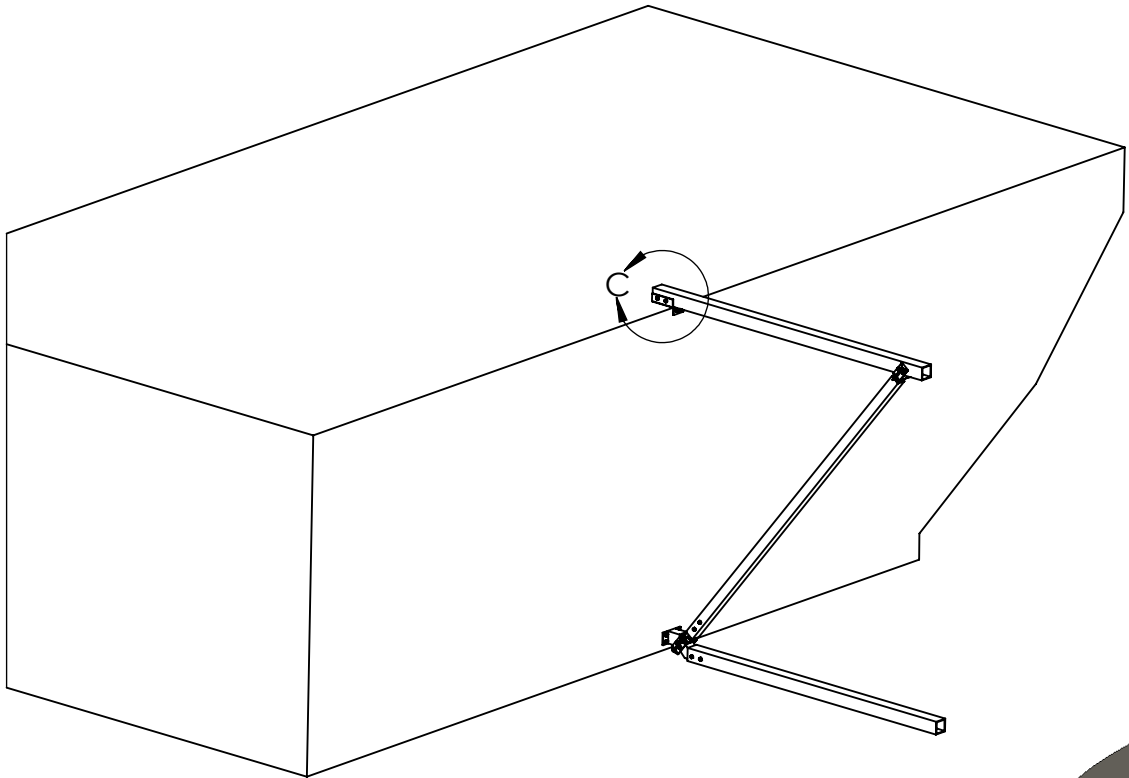
2101 HALL BLVD.
PONCA CITY, OK 74601
PHONE: (580) 762-4114
FAX: (580) 762-4117

PROPRIETARY AND CONFIDENTIAL
THIS INFORMATION CONTAINED IN
THIS DOCUMENT IS THE SOLE
PROPERTY OF CUSTOMER. ANY
REPRODUCTION IN PART OR AS A
WHOLE WITHOUT THE WRITTEN
PERMISSION OF CUSTOMER
MECHANICAL EQUIPMENT IS
PROHIBITED.

NAME	DATE
JLW	4/27/2019
CHECKED	JLW
SHOP	7/8/2021

DESCRIPTION
KICKER OFFSET DETAIL
DRAWING NO. 2021XX-01
SCALE: 1:24 WEIGHT: SHEET 1 OF 2

SADDLE MOUNT ADDS
ADDITIONAL SUPPORT
FOR SCREEN WALL ON
UNITS OVER 108" LONG



INSTALL SADDLE MOUNT AS SHOWN IN DETAIL C
INSURE UNIT ACCESS DOORS ARE NOT IMPEDED
BY PLACEMENT OF CROSS BRACE

TWO 3/8" SELF-TAPPING SCREWS INTO THE FACE OF THE UNIT
INSTALL TUBE TO SADDLE WITH 3 SELF TAPPING SCREWS

DETAIL C
SCALE 1 : 4

CUSTOM MECHANICAL EQUIPMENT

2101 HALL BLVD.
PONCA CITY, OK 74601
PHONE: (580) 762-4114
FAX: (580) 762-4117

PROPRIETARY AND CONFIDENTIAL
THIS INFORMATION CONTAINED
HEREIN IS THE SOLE PROPERTY
OF CUSTOMER. ANY REPRODUCTION
IN PART OR AS A WHOLE WITHOUT THE
WRITTEN PERMISSION OF CUSTOMER
IS PROHIBITED.

DRAWING NO.		DESCRIPTION	
2021XX-01		SADDLE MOUNT DETAIL	
SCALE: 1:24		WEIGHT:	
SHEET 1 OF 2		REV. 0	
DIMENSIONS ARE IN INCHES		DATE	
SHOP		7/8/2021	
CHECKED		JLW	
DRAWN		JLW	
NAME		4/27/2019	
DATE		SADDLE MOUNT DETAIL	

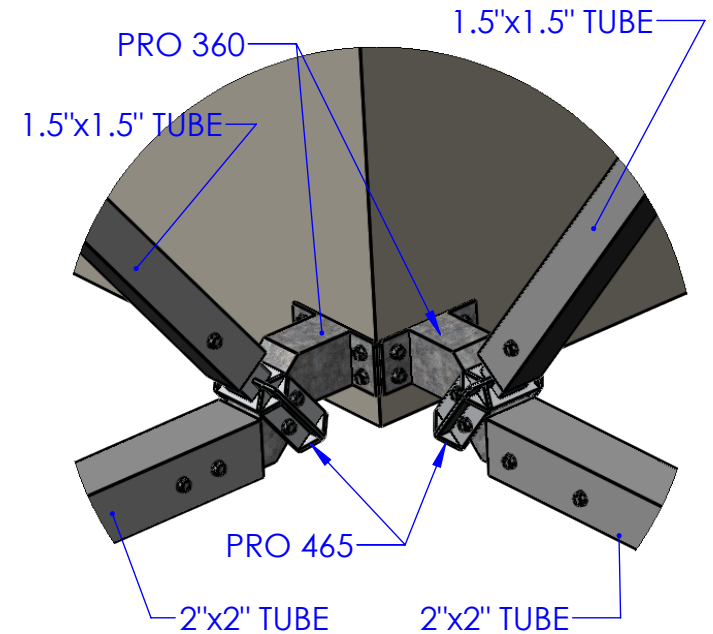
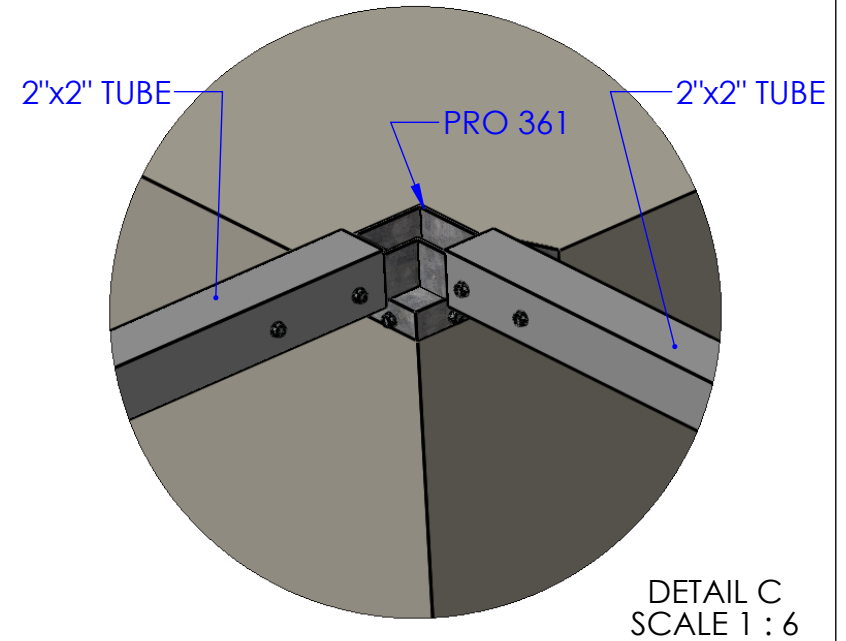
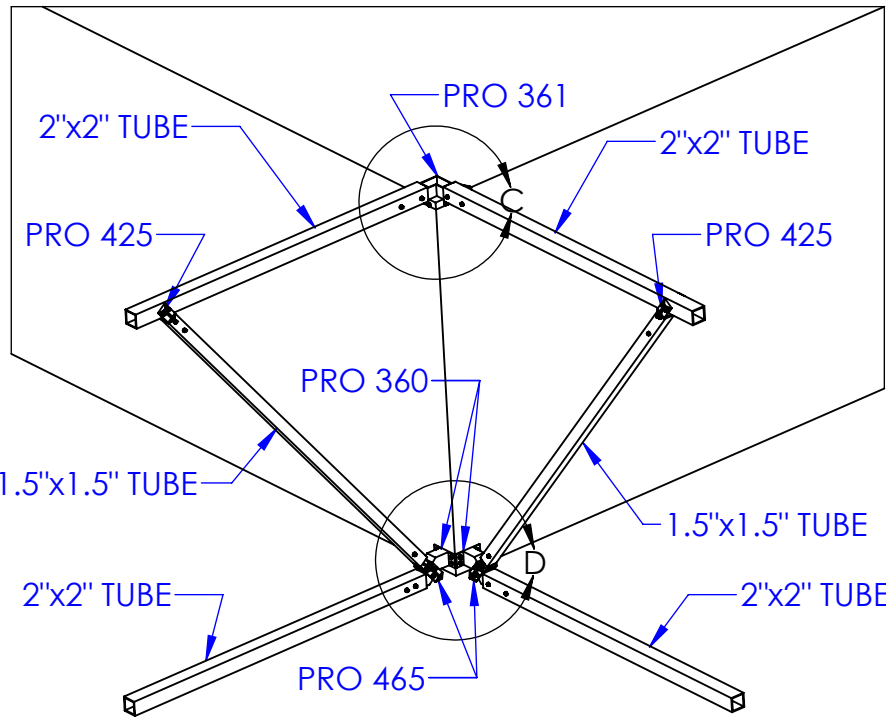
2101 HALL BLVD.
PONCA CITY, OK 74601
PHONE: (580) 762-4114
FAX: (580) 762-4117

CUSTOM MECHANICAL EQUIPMENT

PROPRIETARY AND CONFIDENTIAL
THIS INFORMATION CONTAINED IN
THIS DOCUMENT IS THE SOLE
PROPERTY OF CUSTOMER. ANY
REPRODUCTION IN PART OR AS A
WHOLE WITHOUT THE WRITTEN
PERMISSION OF CUSTOMER
IS PROHIBITED.

NAME	DATE
JLW	4/27/2019
CHECKED	DATE
JLW	7/8/2021
DRAWN	
JLW	

DESCRIPTION
TYPICAL MOUNT DETAIL
DRAWING NO. 2021XX-01
SCALE: 1/2" = 1'-0"
WEIGHT: 10 LBS
SHEET 1 OF 2



PRO 361 ATTACH TO THE TOP OF UNIT WITH
(4) SELF-TAPPING SCREWS, 2 PER SIDE, INTO THE FACE OF THE UNIT

INSTALL PRO 360 TO BASE OF UNIT (4) 3/8" SELF-TAPPING SCREWS
THE PRO 360 IS TYPICALLY ALLIGNED WITH THE TOP EDGE OF THE
BASE, DIRECTLY BELOW THE ARMS OF THE PRO 361

ALL TUBES REQUIRE (3) 3/8" SELF-TAPPING SCREWS, 2 ON ONE
SIDE AND 1 ON THE OPPOSING SIDE

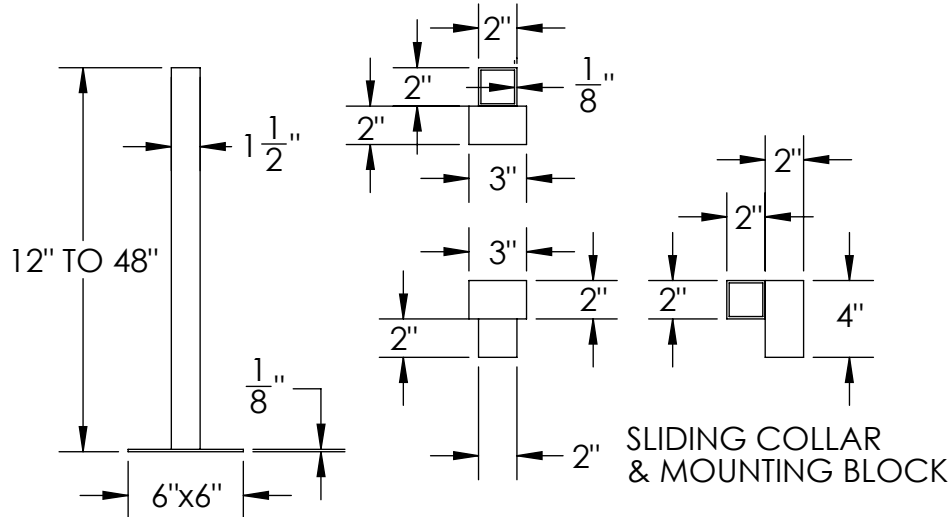
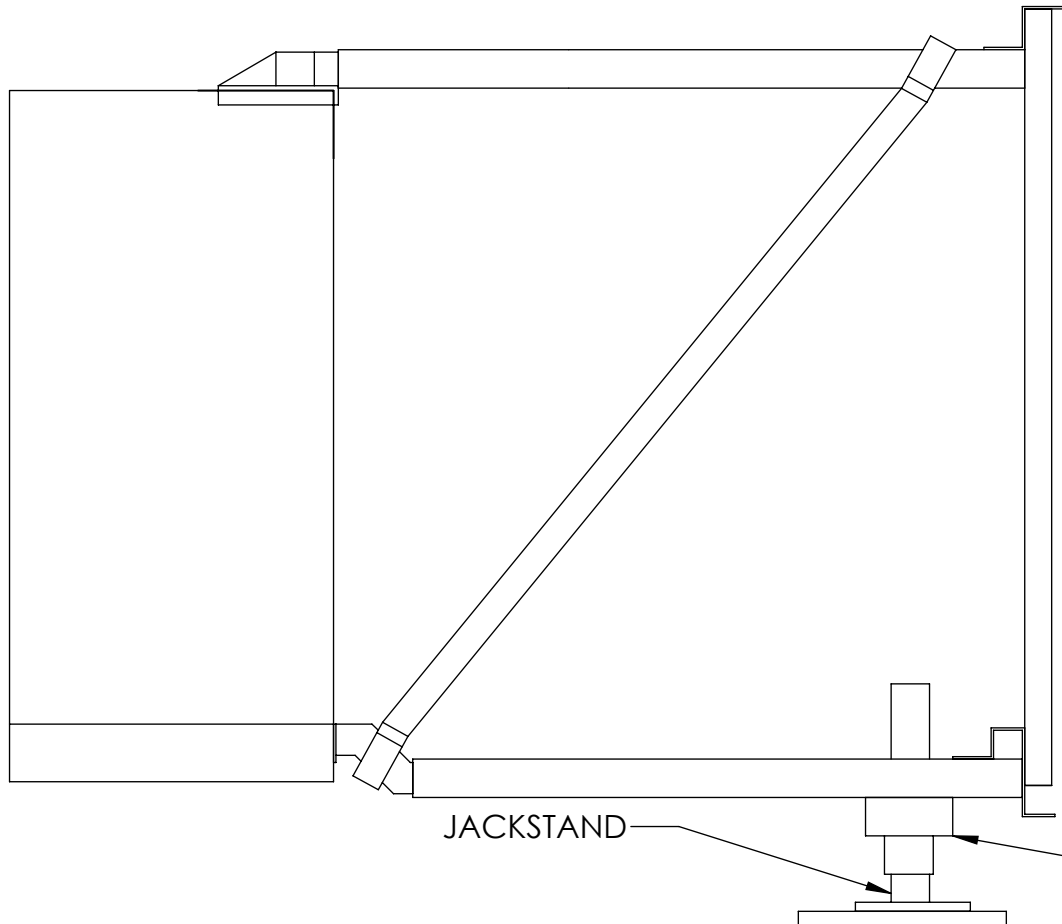
PRO 425 & PRO 465 REQUIRE (3) 3/8" SELF-TAPPING SCREWS
2 ON ONE SIDE AND 1 ON THE OPPOSING SIDE

ALL TUBES MAY REQUIRE ADJUSTMENT TO LEVEL AND PLUMB SCREEN WALL

EACH JACKSTAND IS TO BE PLACED ON THE SCREEN WALL OR FRAMEWORK AS DETAILED IN THAT SPECIFIC UNITS SCREENING DRAWING ONLY CHANGING LOCATION ALONG THE SAME WALL WHEN OBSTRUCTIONS ARE PRESENT IN THE SPECIFIED POSITION

THE JACKSTAND SHOULD BE LOADED WITH 20 -150 LBS OF THE WALLS WEIGHT. TO LEVEL THE SCREEN WALL, AND BALANCE THE LOAD ON THE UNIT CREATED BY VARRIYING OFFSETS OR FOR SCREENS WITH LESS THAN 4 SIDES.

ALL JACKSTAND MATERIALI 6063-T52 ALUMINUM TUBE AND PLATE



USE (2) 3/8" SELF TAPPING SCREWS TO ATTACH MOUNTING BLOCK TO FAMEWORK OR LOWER RAIL
USE (2) 3/8" SELF TAPPING SCREWS TO SET SLIDING COLLAR IN PLACE ON THE JACKSTAND

CUSTOM MECHANICAL EQUIPMENT

2101 HALL BLVD.
PONCA CITY, OK 74601
PHONE: (580) 762-4114
FAX: (580) 762-4117

PROPRIETARY AND CONFIDENTIAL

THIS INFORMATION CONTAINED IN THIS DOCUMENT IS THE SOLE PROPERTY OF CUSTOM MECHANICAL EQUIPMENT. ANY REPRODUCTION IN PART OR AS A WHOLE WITHOUT THE WRITTEN PERMISSION OF CUSTOM MECHANICAL EQUIPMENT IS PROHIBITED.

NAME

DATE

DESCRIPTION

DRAWN

JLW

7/8/2021

JACKSTAND DETAIL

CHECKED

JLW

7/8/2021

SHOP

DRAWING NO.

2021XX-01

REV.

0

DIMENSIONS ARE IN INCHES

SCALE: 1:10

WEIGHT:

SHEET 1 OF 1