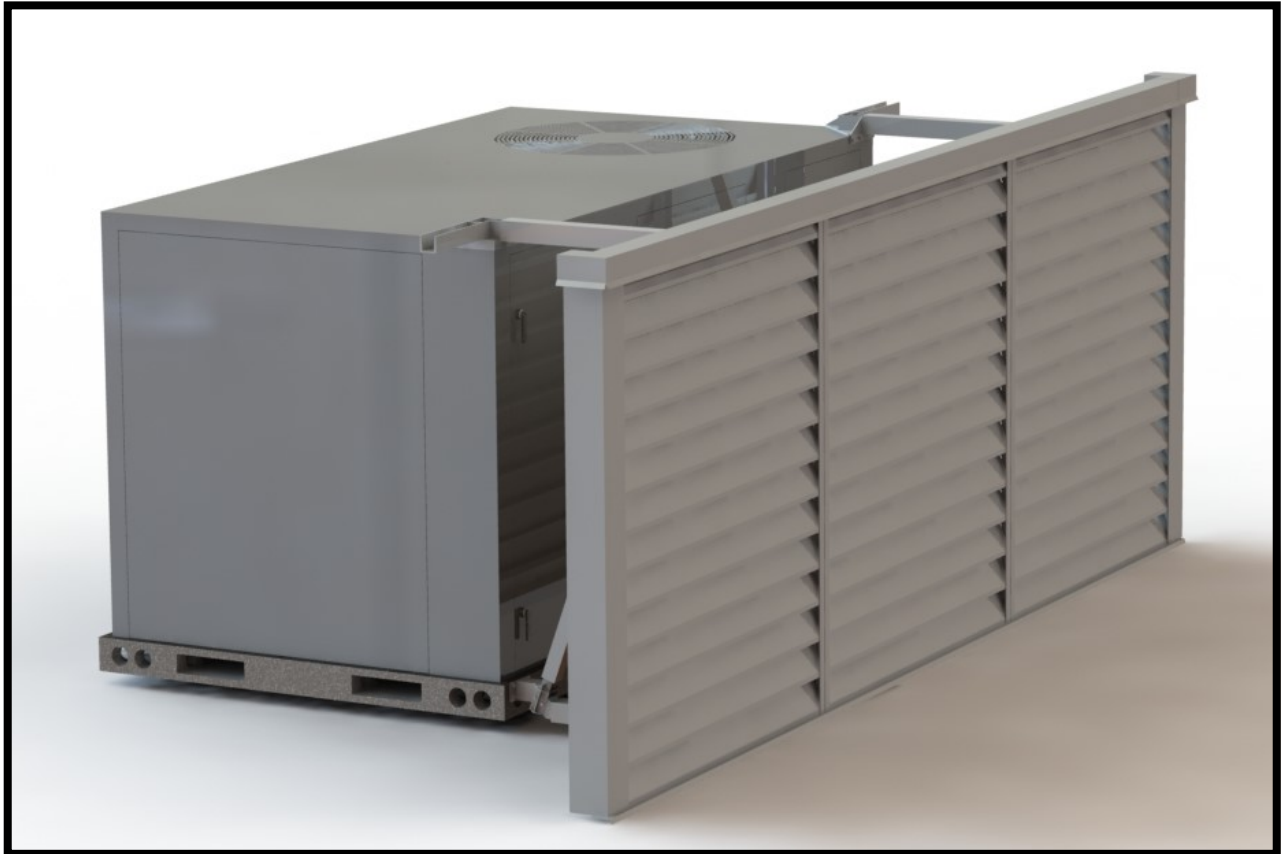




CUSTOM MECHANICAL EQUIPMENT

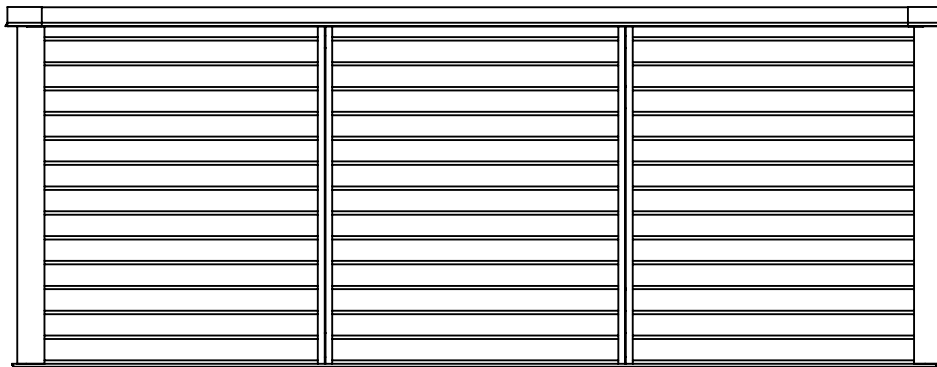
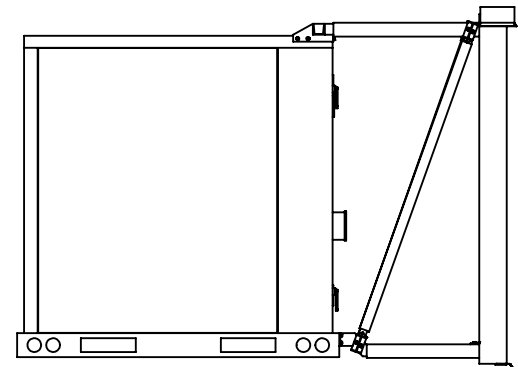
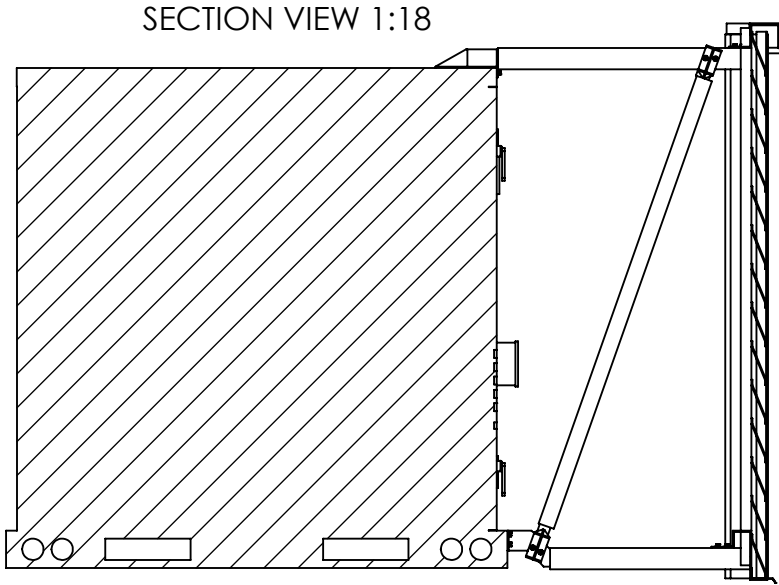
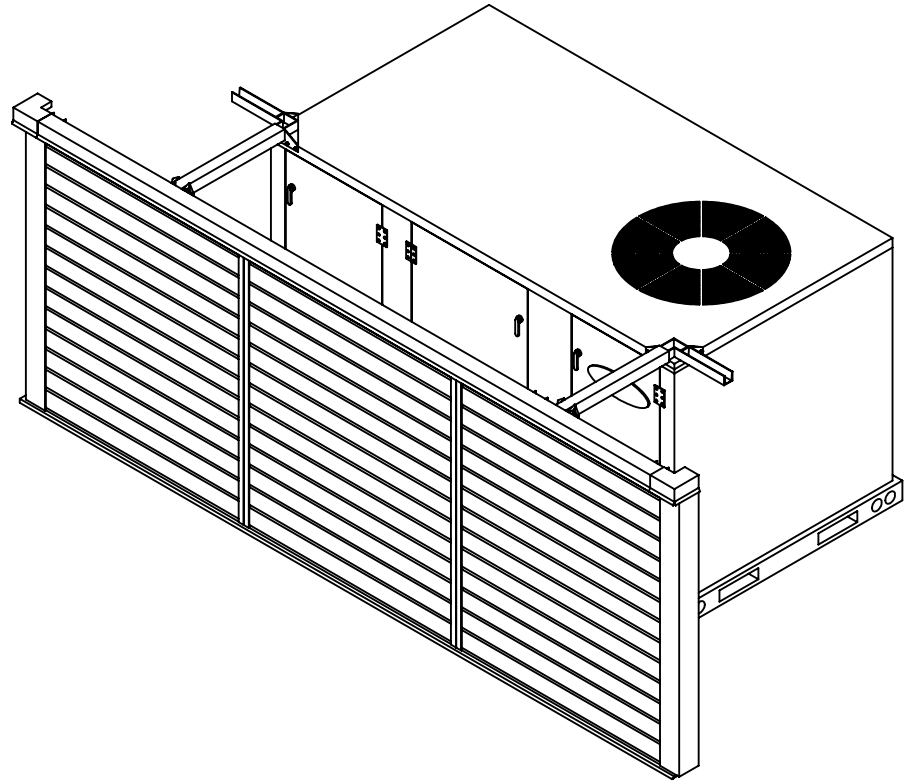
LOUVERED PANEL SCREENING



Louvered Screening

- Louvered screens are available in our full range of color options. Typical construction is extruded aluminum profiles with 26 ga steel flashing. Louvers are powder coated, flashing is PVDF coated.
- Louver blades may be ran in a typical horizontal orientation or an inverted horizontal orientation. Typical horizontal louvers block the unit from view straight on and from above. While inverted louvers block the unit being screened from view from straight on and from below.
- Louvers are typically used to allow additional airflow to HVAC equipment when site conditions require reduced clearances between the unit and the screen wall.

P 580-762-4114
F 580-762-4117
2101 HALL BLVD
PONCA CITY, OK 74601
WWW.CMEMULTIZONE.COM
10/26/2024



COLOR: TO BE DETERMINED
STANDARD COLORS

PANEL TYPE: HORIZONTAL LOUVERED

CUSTOM MECHANICAL EQUIPMENT

2101 HALL BLVD.
PONCA CITY, OK 74601
PHONE: (580) 762-4114
FAX: (580) 762-4117

PROPRIETARY AND CONFIDENTIAL

THIS INFORMATION CONTAINED IN
THIS DOCUMENT IS THE SOLE
PROPERTY OF CUSTOMER. ANY
REPRODUCTION IN PART OR AS A
WHOLE WITHOUT THE WRITTEN
PERMISSION OF CUSTOMER
MECHANICAL EQUIPMENT IS
PROHIBITED.

NAME

DRAWN

CHECKED

SHOP

DIMENSIONS ARE IN INCHES

DESCRIPTION

LOUVERED EXAMPLE

DRAWING NO.

SCALE: 1:28

WEIGHT:

SHEET 1 OF 2

2024XX-01

REV.

0

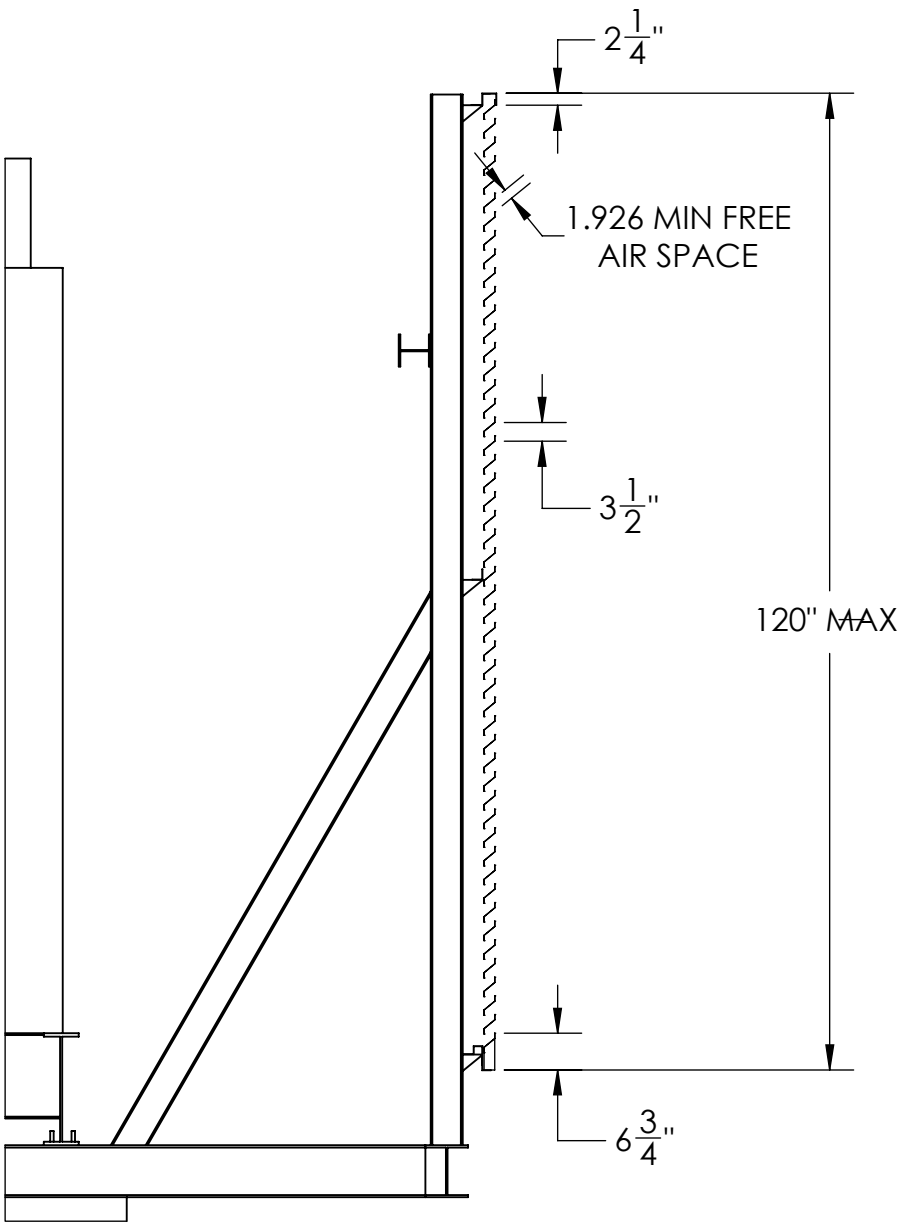
5

4

3

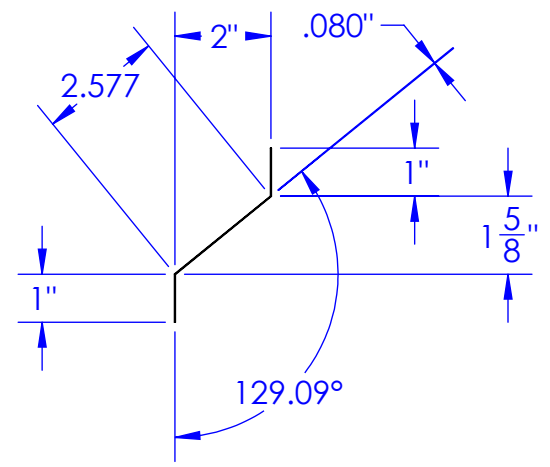
2

1



FREE AIR SPACE
52%

0.080" EXTRUDED ALUMINUM
LOUVER BLADE



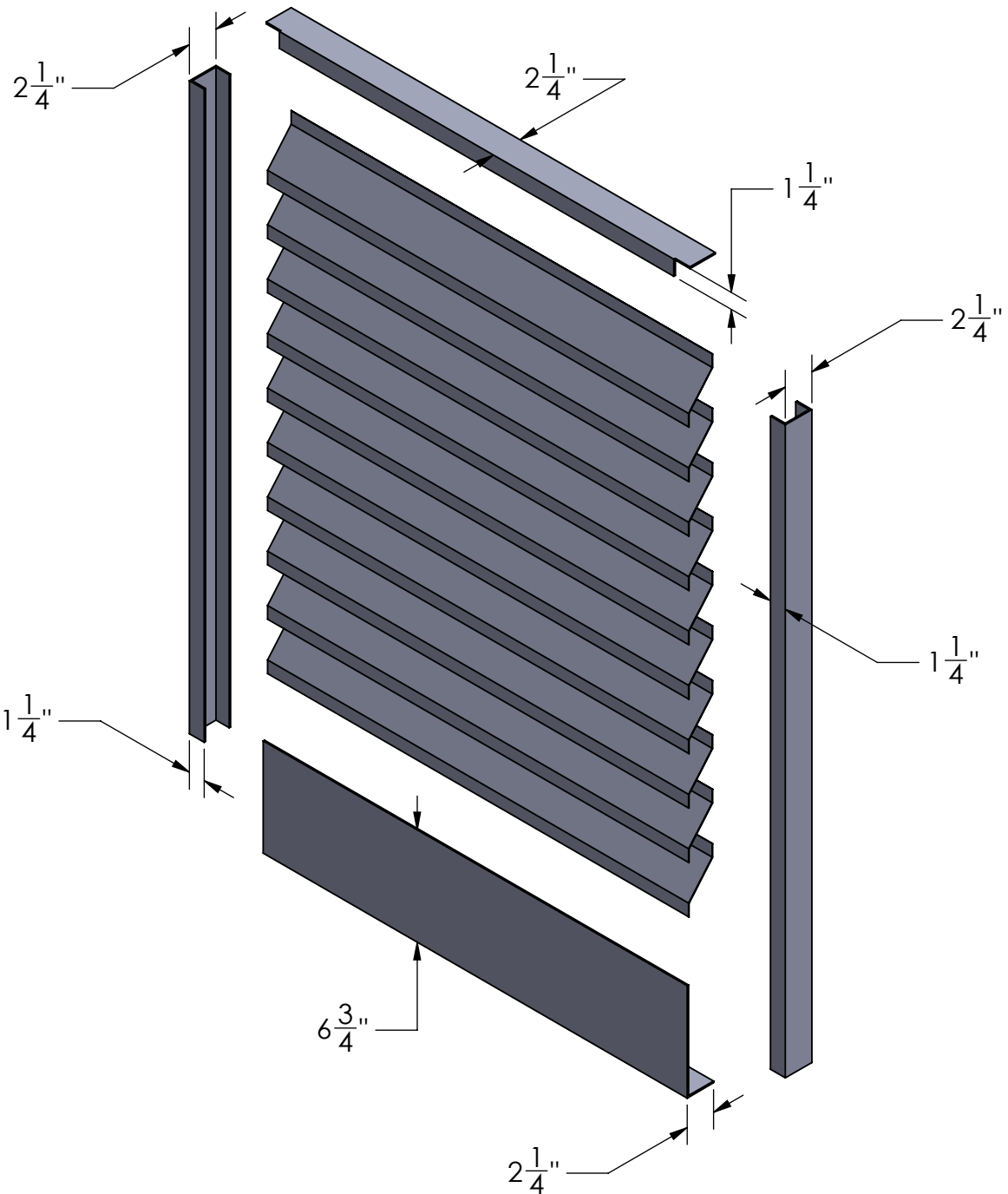
INVERTED LOUVERED PANELS

CUSTOM MECHANICAL EQUIPMENT	PROPRIETARY AND CONFIDENTIAL	NAME	DATE	DESCRIPTION
-----------------------------	------------------------------	------	------	-------------

2101 HALL BLVD.
PONCA CITY, OK 74601
PHONE: (580) 762-4114
FAX: (580) 762-4117

THE INFORMATION CONTAINED IN
THIS DOCUMENT IS THE SOLE
PROPERTY OF CUSTOMER. ANY
REPRODUCTION IN PART OR AS A
WHOLE WITHOUT THE WRITTEN
PERMISSION OF CUSTOMER
MECHANICAL EQUIPMENT IS
PROHIBITED.

			DESCRIPTION		
	NAME	DATE			
DRAWN	JLW	10/6/2021			
CHECKED	JLW	10/5/2024			
SHOP					
DIMENSIONS ARE IN INCHES			DRAWING NO.	2024XX-01	REV.
			SCALE 1/4	WEIGHT:	SHEET 4 OF 4
					3



LOUVER PANEL

CUSTOM MECHANICAL EQUIPMENT

2101 HALL BLVD.
PONCA CITY, OK 74601
PHONE: (580) 762-4114
FAX: (580) 762-4117

PROPRIETARY AND CONFIDENTIAL

THE INFORMATION CONTAINED IN THIS DOCUMENT IS THE SOLE PROPERTY OF CUSTOM MECHANICAL EQUIPMENT. ANY REPRODUCTION IN PART OR AS A WHOLE WITHOUT THE WRITTEN PERMISSION OF CUSTOM MECHANICAL EQUIPMENT IS PROHIBITED.

DESCRIPTION

LOUVER FRAME DETAIL

NAME	DATE
BCS	8/20/2020
CHECKED JLW	8/17/2024
SHOP	

DRAWING NO.	2024XX-01	REV.	0
SCALE: 1:10	WEIGHT:	SHEET 4 OF 4	